



# ETE-TH07A Health Monitoring Bracelet

Remote Health Check Monitoring Technology with precise Heart Rate monitoring, Blood Pressure monitoring, Medication intake reminder and inventory tracking, Sleep Analysis and various day to day Activity tracking



# Remote Health Check and Activity Monitoring is our Mission



## ETE-TH07A



The Health Monitoring Edge device ETE-TH07A is designed for a large variety of applications to enable health monitoring and activity tracking remotely and instantly. We integrate Real Time data through the ETE-TH07G A-IOT Smart Bluetooth Gateway and/or our ETE Health Mobile Applications compatible with Android and IOS. We also offer desktop based software to view collected data of a large number of individuals along with customizable alarm functionality considering Cloud and Premise Based Evaluation.

- Browser based Software and Mobile Apps
- Real-Time data with distribution analysis
- Alarm with pre-set threshold through backend configuration – Heart Rate, Blood Pressure, Location etc.
- Indoor Bracelet location service when multiple Gateways are deployed
- Features such as Social Distancing, Temperature Sharing are coming soon





SAMPLE



APPLICATIONS



# ETE-TH07A Heart Rate Monitoring

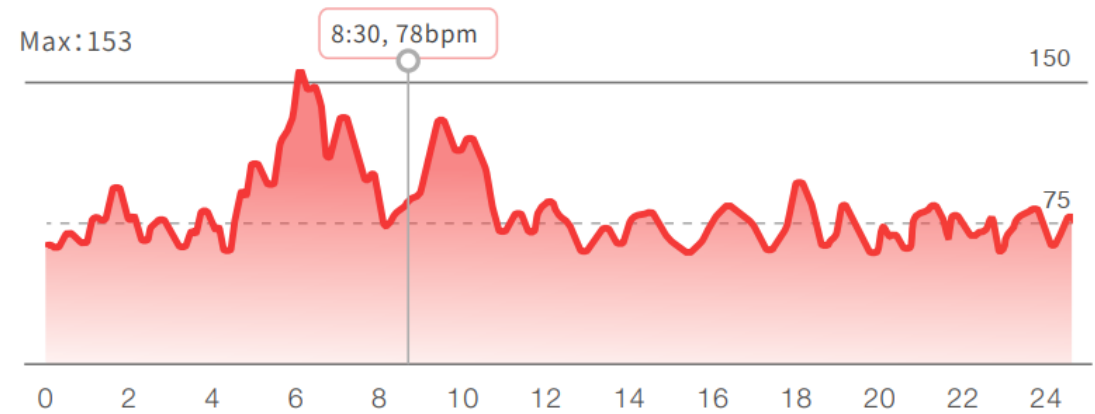
- Real Time Heart Rate Monitoring
- Resting Heart Rate tracking
- Built-in Heart Rate monitor automatically turns on upon activity detection
- Efficiency analysis in 5 Heart Rate Zones
- Instant Health Status Sharing with SOS Centers
- Bracelet Vibration and Remote Visualization upon Alarm



## Heart Rate



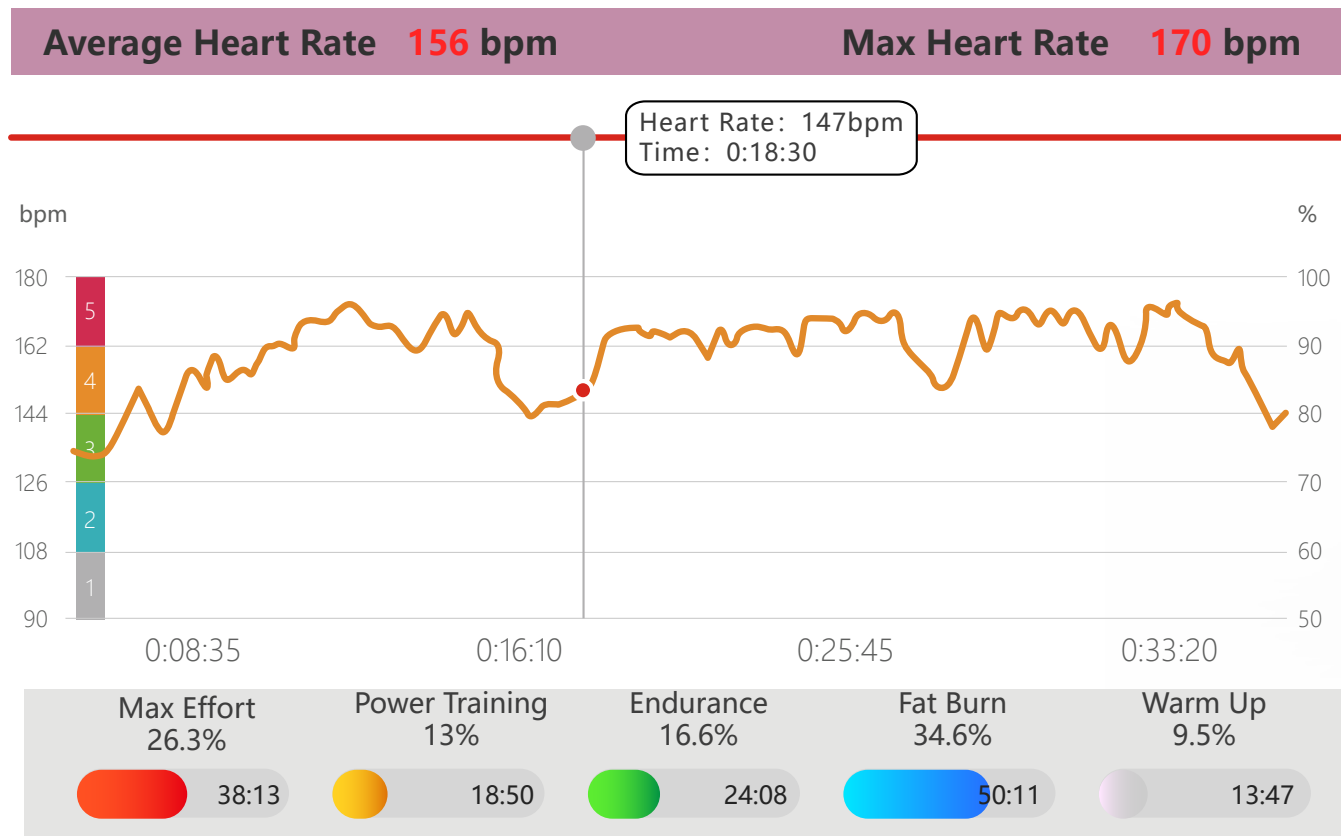
<b>Fat Burn</b> 90~110 BPM	5min	<b>Endurance</b> 136~155 BPM	13min
<b>Power Training</b> 111~135 BPM	26min	<b>Anaerobic</b> 156~190 BPM	35min





# ETE-TH07A Blood Pressure Monitoring

- Advanced Blood Pressure Monitoring through advanced optical sensors and vital signal processing algorithms
- Helps in hypertension diagnosis
- Assist doctors develop patient treatment programs based on Blood Pressure patterns
- Instant Health Status Sharing with SOS Centers
- Bracelet Vibration and Remote Visualization upon Alarm



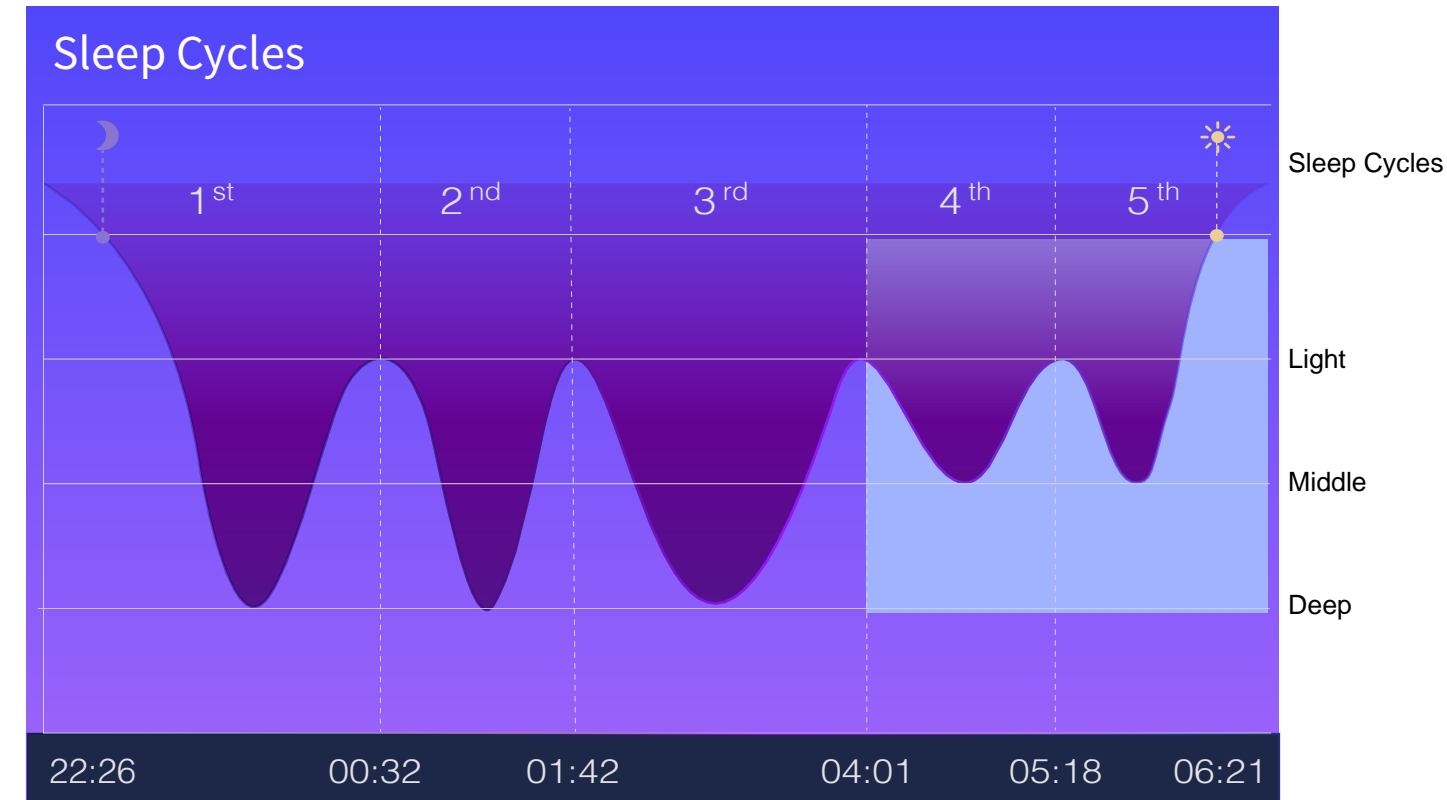
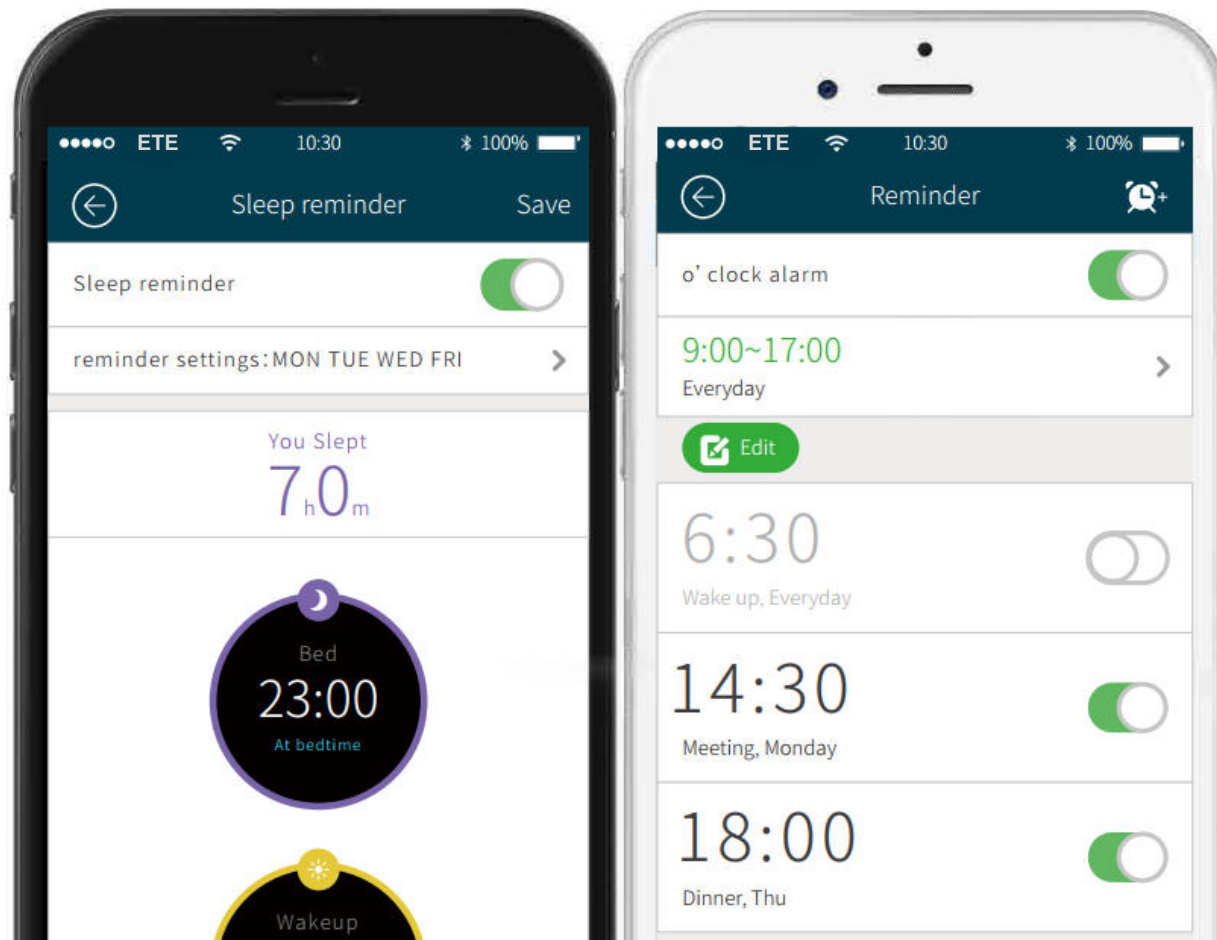
## ETE-TH07A Smart Medication Tracking

- Bracelet Medicine schedule vibration alerts to the wearer
- Upload Medicine intake schedules through the ETE Health App
- Track wearer compliance to prescriptions through medicine inventory automatic tracking
- Easily add new medications and delete old ones through ETE Health App



# ETE-TH07A Sleep Analysis

- Built-in accurate Sleep Analysis algorithms
- Sleep information is also uploaded to ETE Health Platform
- ETE-TH07A analyses wearer sleep index based on sleep cycles
- Set sleep reminders to receive bedtime and wake-up alerts



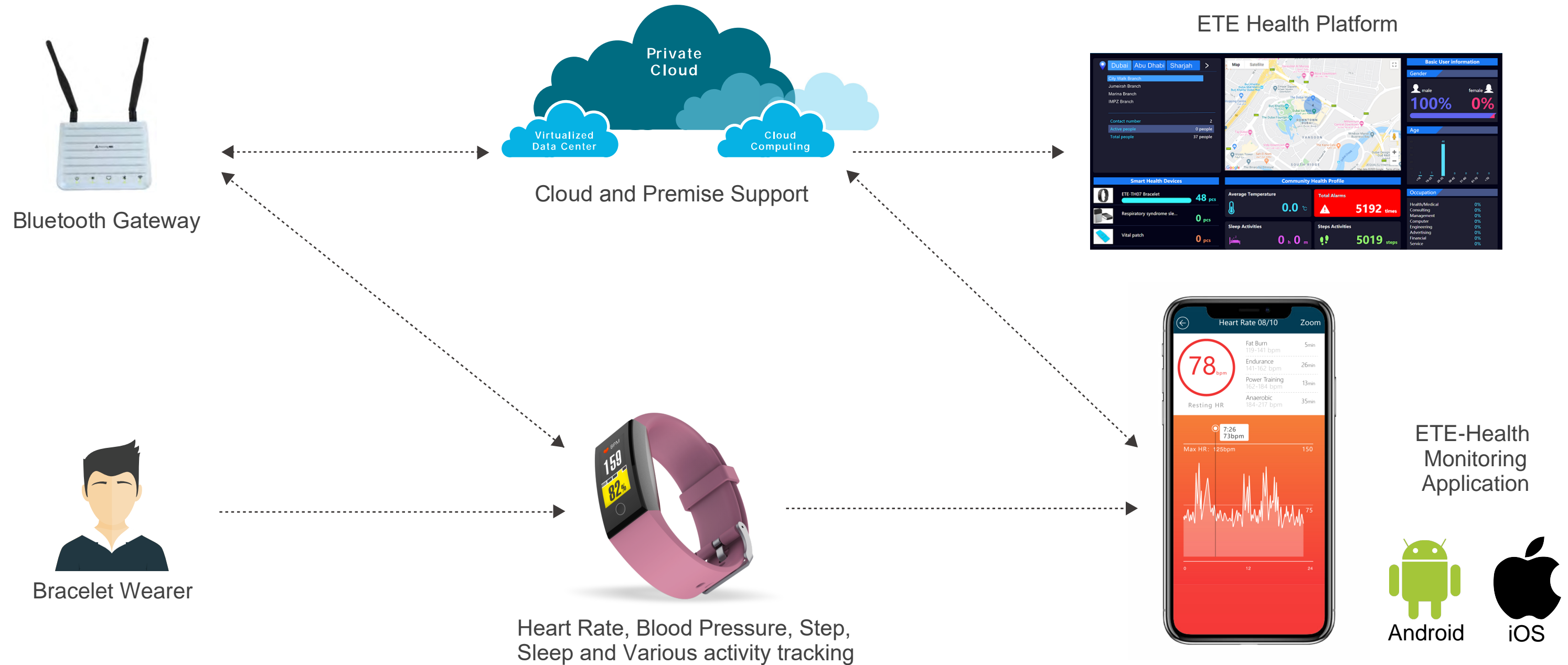
	Awake	Light	Middle	Deep
	2%	52%	21%	25%

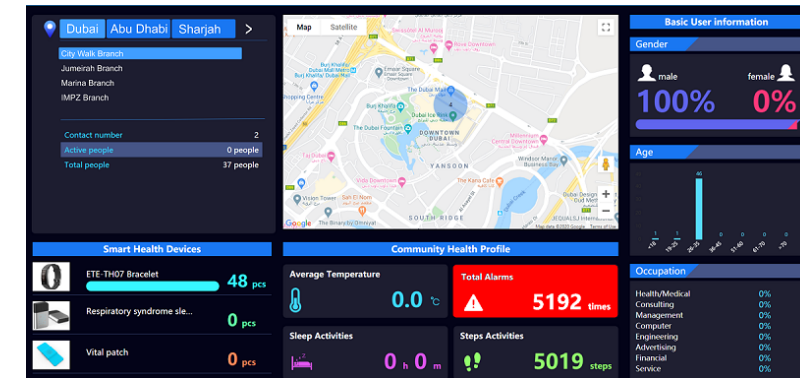
CYCLES	HR(BMP)		
	LIGHT	DEEP	CHANGE
1	33.1 / 61	33.6 / 63	+0.5 / +2
2	32.1 / 56	32.3 / 65	+0.2 / +9



# ETE-TH07A Remote Health Monitoring System Architecture



ETE Health Platform



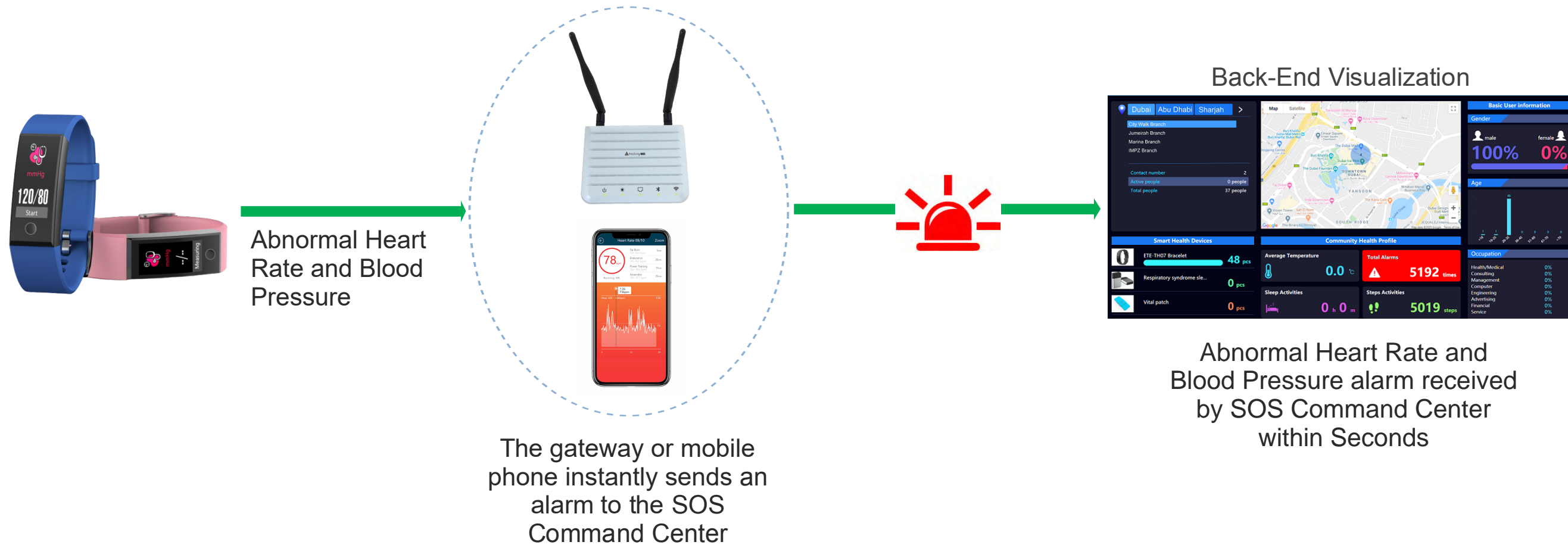
ETE-Health Monitoring Application



Heart Rate, Blood Pressure, Step, Sleep and Various activity tracking

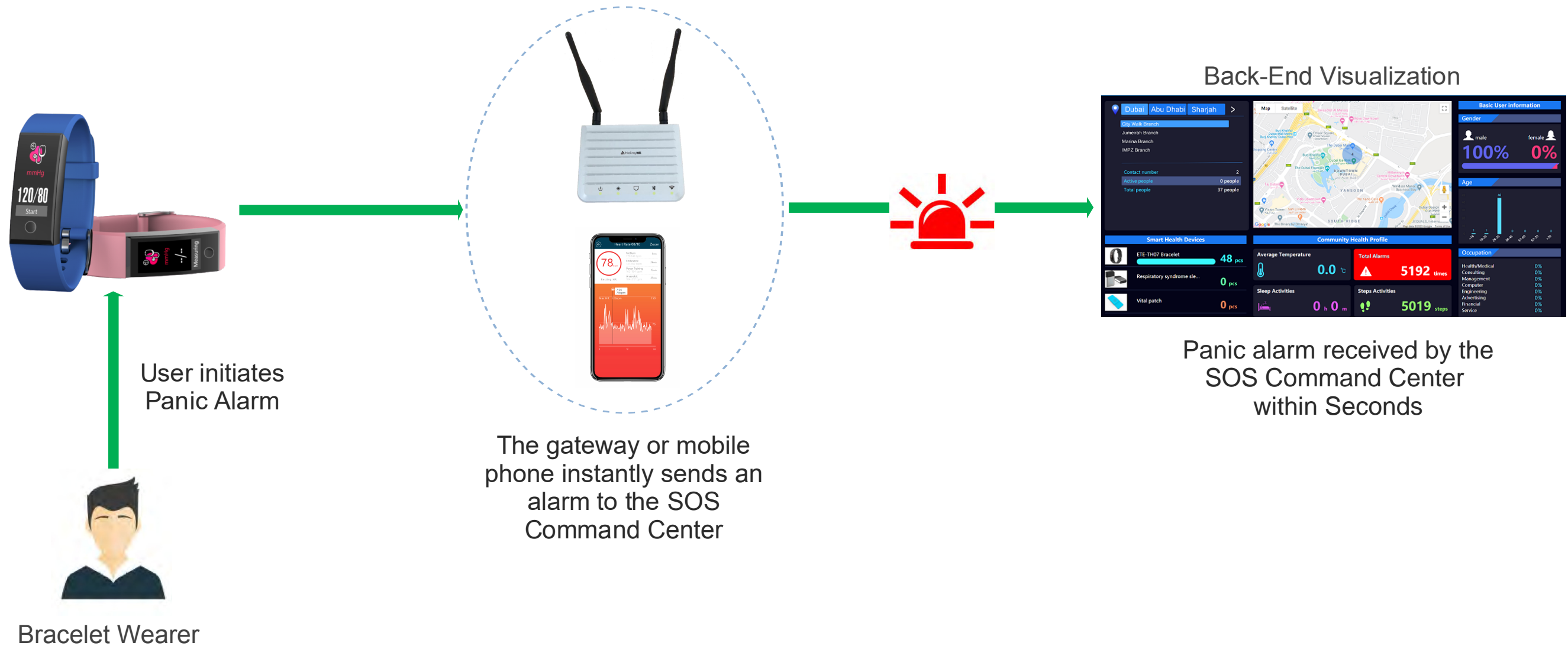
# ETE-TH07A Abnormal Heart Rate and Blood Pressure Alarm

- Bracelet vibration to alert the wearer
- Real-Time Alarm to the SOS Command Center
- Customisable Alarm thresholds through ETE Health App



# ETE-TH07A Panic Alarm

- Real-Time Panic Alarm Monitoring
- Panic Alarm will be sent to the SOS Command Center
- Bracelet Vibration and Remote Visualization upon Alarm





# ETE-TH07A NFC Function

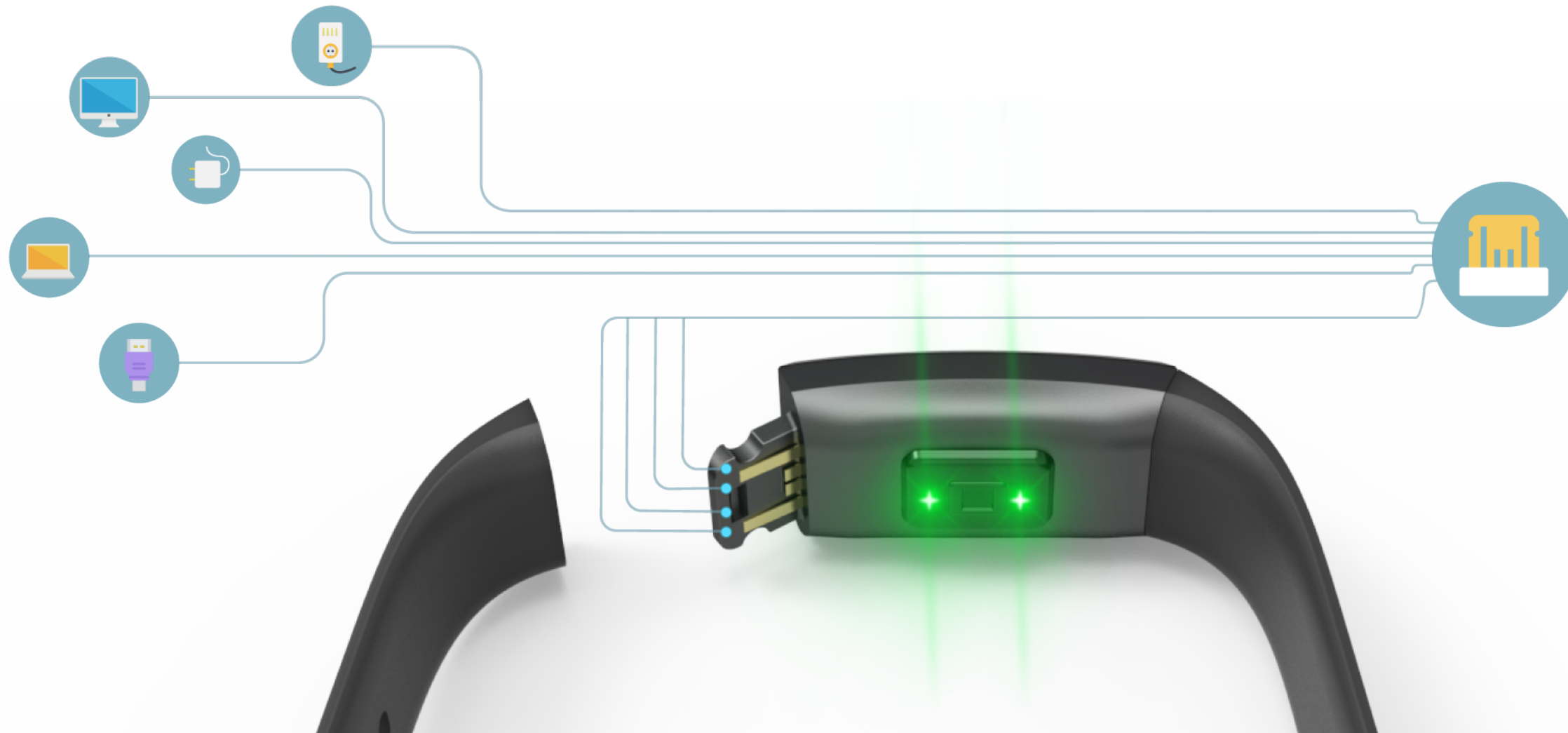
- Built-in NFC Tag to track location, Check in and Check out Time
- Access Control
- Contact Free
- Instant and Online



## ETE-TH07A At a Glance

- Accurate Heart Rate and Blood Pressure fluctuations measuring
- Continuous measurement throughout the day with user defined time intervals
- Built-in USB charging connector for easy charging experience
- Ultra-low power processor with up to 10 days of battery life from a single charge

\*Depending on usage



# ETE-TH07A Complimentary Features

- Complimentary Bracelet features combined with continuous Health Check and Remote Monitoring
- Activity Tracking information - Sleep, Walking, Steps, Running, Cycling, Gym Workout - Analysis
- The bracelet gives the wearer various sedentary alerts throughout the day as a form of motivation to stay active





## ETE-TH07A Complimentary Features

- Various band color options and designs to suit your requirements
- Various notification alerts, incoming texts, emails, phone calls, news, weather etc
- Customisable Bracelet widgets as per user requirement
- Daily weather updates and temperature changes



# Remote Health Monitoring Technology Product Comparison



Model	ETE-TH07	ETE-TH07A	ETE-TH07L
Body and Wrist Temperature Measuring	YES	NO	NO
Heart Rate Measuring	NO	YES	YES
Blood Pressure Measuring	NO	YES	YES
Medicine Reminder	YES	YES	YES
Sleep Analysis	YES	YES	YES
Various Activity Tracking (Step, Running, Aerobics, Cycling, Gym, Swimming. etc)	YES	YES	YES
Panic Alarm	YES	YES	YES
Not Worn Alarm	YES	NO	NO
NFC	YES	YES	NO
GPS Location	Support through Mobile Phone	Support through Mobile Phone	Built-in
Touch Responsive Screen	Only Navigation Key	Only Navigation Key	YES
Function Keys	1	1	2
Battery Endurance (May vary depending on usage)	12+ Days	7+ Days	28+ Days
Water and Dust Proof	IP68	IP68	ATM5



**YOUR GOAL IS  
OUR MISSION**

*Dear Partners,*

*Eye To Eye Security Trading DWC-LLC, established in January 2017 with a Security background of more than 38 years provides a tailor-made product portfolio to suite a wide range of Mobile Surveillance Applications.*

*Before we do anything, we start with our clients in mind and this enables us to develop solutions which create tangible benefits and deliver excellent Return on Investment.*

*We are intrinsically R&D and Service oriented in spirit and for this reason we invest a large part of our annual revenue to develop more innovative products and mobile solutions. We take to heart the adage that excellence is a journey and cordially invite you to join us through a progressive future.*

*Warmest welcome,*

*Your trusted Eye To Eye Security Team for Versatile Temperature Measuring and Health Check Solutions*

